



SAMCO Warehousing System for
desktops and mobile devices

Objective

The existing item location code feature was enhanced so that items can be moved to any locations, be able to track the movements as to who or when the items were moved, and find out in real time how many items are in each location.

Introduction

The 3 Item location codes used to exist on the Item Status screen. This was changed so that items can now have unlimited location codes. The item locations can now be viewed by pressing the F6 key on the Item Status screen.

01: IC - Item status, Enter

File Edit AR IC OE SA AP GL CL PA DX CM SF Help

Status BARCLAY 01 TEST COMPANY

Enter Current period February, 2019

Warehouse Central CEN WRHSE

* 1. Item 11812T TUNDRA SEAL PIPE INSUL.
1-1/8 x 1/2 x 6'
SOLD IN CS QTY *30*
Category/sub-cat PI 1/2
Vendors 1255

Location codes (Press F6)

Stocking unit EACH

2. Max. qty allowed 1,530 13. Reorder level 510

3. Reorder minimum 0

4. Last sold on 2/27/19

5. Last used on None

6. Last received 2/25/19

7. Avg qty on hand 1,020

8. Qty on hand 3,885

9. Qty committed 4

10. Qty on back-ord 0

11. Qty on order 0

12. Qty on work-ord 0

F1=next status ShF1=prev status F3=delete F6=locations F7=prices
field number to change ?

Press the F6 to view the locations of the item

BA: IC - Item status, Enter

File Edit AR IC OE SA AP GL CL PA DX CM SF Help

Status BARCLAY SALES LTD

Item Locations

Warehouse Central

Item-no NORMAL

Loc code	Qty-on-hand	Qty-committed	Priority
Main	100.00	.00	0

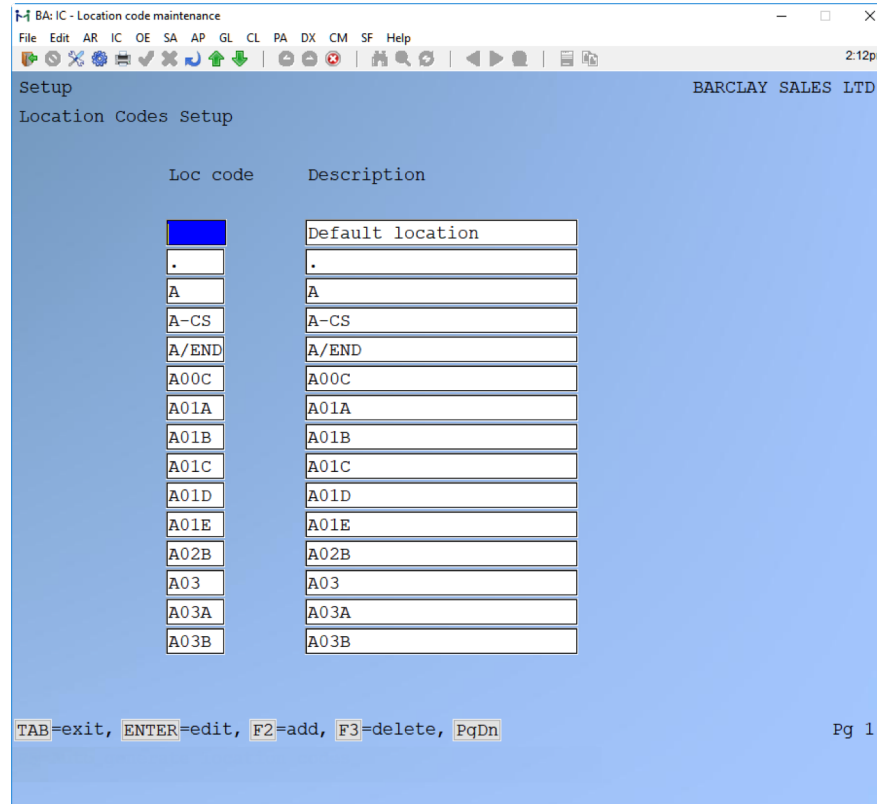
Totals: 100.00 .00

TAB=exit, ENTER=edit, F2=add, F3=delete

Pg 1

Location Codes

When a company database is upgraded to a future release and this option is purchased and the custom is activated, all existing item locations will be consolidated into the new Location Codes table. The Location Codes table maintenance can be found in Inventory Management, Setup, Location Codes.



The screenshot shows a window titled "BA: IC - Location code maintenance" with a menu bar (File, Edit, AR, IC, OE, SA, AP, GL, CL, PA, DX, CM, SF, Help) and a toolbar. The window content is titled "Setup" and "Location Codes Setup" for "BARCLAY SALES LTD". It displays a table with two columns: "Loc code" and "Description". The table contains the following entries:

Loc code	Description
	Default location
.	.
A	A
A-CS	A-CS
A/END	A/END
A00C	A00C
A01A	A01A
A01B	A01B
A01C	A01C
A01D	A01D
A01E	A01E
A02B	A02B
A03	A03
A03A	A03A
A03B	A03B

At the bottom of the window, there is a legend: "TAB=exit, ENTER=edit, F2=add, F3=delete, PgDn" and the page number "Pg 1".

Tracking Item Location

Inventory Receiving Transactions

When an item is received, the items will be assigned a blank location code which gets displayed by the system as “Main” location. Thus, all items will have a default location of “Main”.

Changing Item locations

An item location can be changed using the “Change item location” option of the Status submenu.

Example 1 - Non-tracked item.

For the “To location”, press ? key to show a selection of existing locations for the item or press F2 to show all available locations. Then, enter the desired quantity to move and press Enter.

To view the locations of the item as shown press F8, 9, then enter the Item#: →

BA: IC - Item status, Enter
File Edit AR IC OE SA AP GL CL PA DX CM SF Help 12:27am
Move item to a location BARCLAY SALES LTD
Item movement (Enter)

1. Item number NORMAL Not tracked item

2. From warehouse Ce CEN WRHSE

3. To warehouse Ce CEN WRHSE

4. Lot number (n/a)

5. From location Main Qty-on-hnd 100.00

6. To location A01B

7. Qty. to move 50.00

Field number to change ?

Find item by location

	Warehse	Loc	Item-#	Qty. on hand	Qty. committed
*01)	Central	Main	NORMAL	50.000	0.000
02)	Central	A01B	NORMAL	50.000	0.000

**** No more on file ****

F1=next ShF1=prev F3=Search F7=Filter

Example 2 – Always serialized item

Move item to a location
Item movement (Enter)

1. Item number SERITEM Serialize item

2. From warehouse Ce CEN WRHSE

3. To warehouse Ce CEN WRHSE

4. Lot number (n/a)

5. From location Main Qty-on-hnd 100.00

6. To location A13B

7. Qty. to move 5.00

Field number to change ? []

Serial numbers, View

Item number SERITEM Serialize item Trk-meth Always serial

Inquiry type Unsold items

Start serial # "First"

Serial-number	Rcv-date	P.O.number	Source	Cost	Location
1000	10/04/18	TEST	TEST	1.000	A13B
1001	10/04/18	TEST	TEST	1.000	A13B
1002	10/04/18	TEST	TEST	1.000	A13B
1003	10/04/18	TEST	TEST	1.000	A13B
1004	10/04/18	TEST	TEST	1.000	A13B
1005	10/04/18	TEST	TEST	1.000	
1006	10/04/18	TEST	TEST	1.000	
1007	10/04/18	TEST	TEST	1.000	
1008	10/04/18	TEST	TEST	1.000	
1009	10/04/18	TEST	TEST	1.000	
1010	10/04/18	TEST	TEST	1.000	
1011	10/04/18	TEST	TEST	1.000	
1012	10/04/18	TEST	TEST	1.000	

PgDn for next page, PgUp for previous page, or ENTER for more information

For the “To location”, press ? key to show a selection of existing locations for the item or press F2 to show all available locations. A selection window of the serial# to move to another location will show up on the screen. The number of the selected serial #'s will be shown on “Qty. to move” field.

To verify that the serialized item location was changed, use the View Serial numbers screen.

Example 3 – Sometimes serialized item

For the “To location”, press ? key to show selection of existing locations for the item or press F2 to show all available locations. A selection window of the serial# to move to another location will show up on the screen. Then, enter the quantity to move. This quantity to move must be equal to or more than the quantity of serial numbers selected.

The screenshot shows a terminal window titled "BA: IC - Item status, Enter" with a menu bar (File, Edit, AR, IC, OE, SA, AP, GL, CL, PA, DX, CM, SF, Help) and a system clock (12:44am). The main window has a blue background and contains the following form fields:

- 1. Item number: SOMESER (input field) | Sometimes serialized (text)
- 2. From warehouse: Ce | CEN WRHSE (dropdown)
- 3. To warehouse: Ce | CEN WRHSE (dropdown)
- 4. Lot number: (n/a)
- 5. From location: Main (input field) | Qty-on-hnd: 50.00 (input field)
- 6. To location: A18C (input field)
- 7. Qty. to move: 10.00 (input field)

At the bottom, there is a red prompt "Field number to change ?" followed by a blue cursor box.

Example 4 – Lot controlled items

For Lot controlled items, a lot number to move items from is required. For the “To location”, press ? key to show selection of existing locations for the item or press F2 to show all locations. Then, enter the quantity to move. This quantity to move must be equal to or less than the quantity of items in the lot selected.

Note: *If warehouse costing is enabled, when moving items from one warehouse to another, a transfer transaction record and serial/lot number transaction record will be automatically created and posted. This feature should only be used when no in-transit time is involved in the item move.*

BA: IC - Item status, Enter

File Edit AR IC OE SA AP GL CL PA DX CM SF Help

12:51am

Move item to a location BARCLAY SALES LTD

Item movement (Enter)

1. Item number LOTITEM Lot item

2. From warehouse Ce CEN WRHSE

3. To warehouse Ce CEN WRHSE

4. Lot number 7000

5. From location Main Qty-on-hnd 1,990.00

6. To location D05A D05A Qty-on-hnd .00

7. Qty. to move 1,000.00

Field number to change ?

Order Entry/Picking

A line item entry in Order Entry, Invoicing and Rapid Entry will now show a location to pick from right after entering a line item. On that window, enter how many to pick or was picked from a location. All the locations of the item will be listed on the window in the order of the Priority assigned to the location. As you have probably guessed, the picked/to pick quantity will be used to reduced the quantity on hand in the item's locations.

For an always serialized item, the location to picked from will not be shown as the selected serial# has the location information and is always for one unit.

Note: When printing an invoice, the system verifies if all line items picked quantity have been entered and warns the user if any line item has incomplete picked quantity.

Once the invoice is printed and posted, all the appropriate item's location quantity on hands should have been reduced.

BA: IC - Item status, Enter
File Edit AR IC OE SA AP GL CL PA DX CM SF Help
12:51am
Move item to a location BARCLAY SALES LTD
Item movement (Enter)

1. Item number	LOTITEM	Lot item
2. From warehouse	Ce CEN WRHSE	
3. To warehouse	Ce CEN WRHSE	
4. Lot number	7000	
5. From location	Main	Qty-on-hnd 1,990.00
6. To location	D05A D05A	Qty-on-hnd .00
7. Qty. to move	1,000.00	

Field number to change ? []

Physical Count

The physical count has been enhanced so that item counts is now entered per location of the item being counted. Thus, the suspension record will now create records per location of an item within a warehouse.

The item count entry screen has been enhanced to allow entry per location as shown below:

Likewise, the “Create adjustments” option in the Physical Count menu will create inventory adjustment records per item location. This will adjust the item location quantity on hand after posting the inventory transactions.

BR: IC - Physical count, Enter

File Edit AR IC OE SA AP PC GL BR PA DX MS WI CM SF Help

Physical count BR EXCAL COPY - BROGAN SAFETY

Enter count Category "All"

** By location **

1. Item number 65808 * AIR HORN - 8 OUNCE PUSH
BUTTON HORN KIT

Warehouse Central Category 1660

2. Location [Blue Box] Track meth Normal

3. Count qty-1 On file as of Qty-on-hand-EACH

4. Count qty-2 Total counted

5. Count qty-3

6. Count qty-4

7. Count qty-5

8. Comment

User now has to enter the location where the item was counted from.

Item Movement Report

Item movement report can be printed from Inventory Management, Reports, F2 for more selections, Item movement report.

Example item movement report ->

Report display (file://C:\SSITHIN\ssiprint.html)

Date 10/16/18 Time 13:38:47 BARCLAY SALES LTD User: SSI Report #6648 Page 0001

ITEM MOVEMENT REPORT

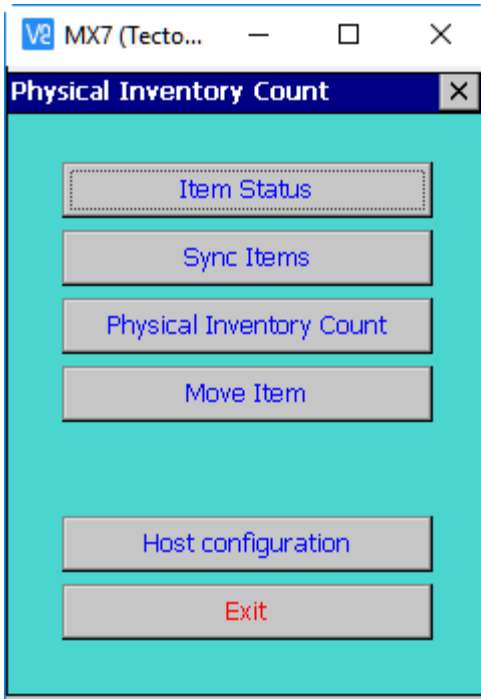
Item from: "First" To: "Last"
 Src Warehse from: "First" to: "Last"
 Dest Warehse from: "First" to: "Last"
 Src Location from: "First" To: "Last"
 Dest Location from: "First" To: "Last"
 Serial/lot# from: "First" To: "Last"
 Date from: "Earliest" To: "Latest"

Item-no	From warehse	To warehse	From location	To location	Serial/Lot#	Quantity	Date	Time	User
F1	Central	Central	Main	Main		1	10/15/18	03:23:37 PM	SSI
			Source: Inv. Trx. posting						Trans. Tye: Non-specific down adj.
F1E	Central	Central	Main	Main		1	10/15/18	03:23:37 PM	SSI
			Source: Inv. Trx. posting						Trans. Tye: Non-specific up adj.
F5E	Central	Central	Main	Main		1	10/15/18	03:23:37 PM	SSI
			Source: Inv. Trx. posting						Trans. Tye: Non-specific up adj.
LOTITEM	Central	Central	Main	Main	1500	20	10/16/18	08:39:20 AM	SSI
			Source: Inv. Trx. posting						Trans. Tye: Receiving
LOTITEM	Central	Central	Main	Main	1500	10	10/16/18	12:06:20 AM	SSI
			Source: Inv. Trx. posting						Trans. Tye: Sales transaction.
LOTITEM	Central	Central	Main	Main	2500	20	10/16/18	08:39:20 AM	SSI
			Source: Inv. Trx. posting						Trans. Tye: Receiving
LOTITEM	Central	Central	Main	Main	2500	10	10/16/18	12:06:20 AM	SSI
			Source: Inv. Trx. posting						Trans. Tye: Sales transaction.
LOTITEM	Central	Central	Main	Main	7000	2,000	10/15/18	03:23:37 PM	SSI
			Source: Inv. Trx. posting						Trans. Tye: Receiving
LOTITEM	Central	Central	Main	Main	7000	10	10/16/18	12:06:20 AM	SSI
			Source: Inv. Trx. posting						Trans. Tye: Sales transaction.
LOTITEM	Central	Central	Main	D05A	7000	1,000	10/16/18	12:54:48 AM	SSI
			Source: Item location change						Trans. Tye: Item move
LOTITEM	Central	Central	Main	Main	900000	2,000	10/01/18	09:54:02 AM	SSI
			Source: Inv. Trx. posting						Trans. Tye: Receiving
NORMAL	Central	Central	Main	Main		10	10/01/18	09:54:02 AM	SSI
			Source: Inv. Trx. posting						Trans. Tye: Receiving
NORMAL	Central	Central	Main	A03B		3	10/03/18	02:45:40 PM	SSI
			Source: Item location change						Trans. Tye: Item move

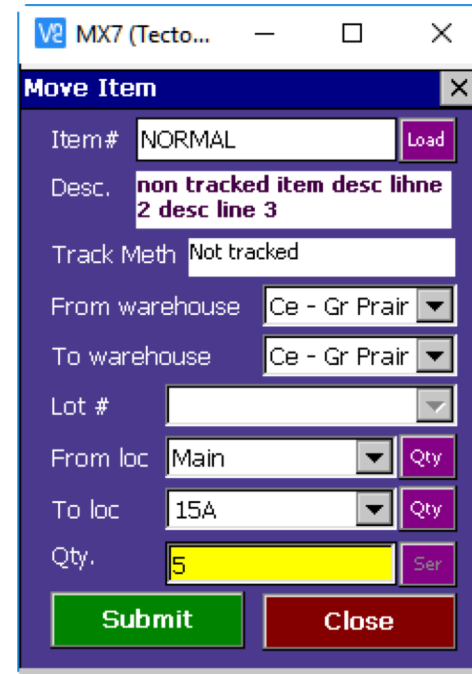
Exit Print Save

Handheld application Samco Inventory

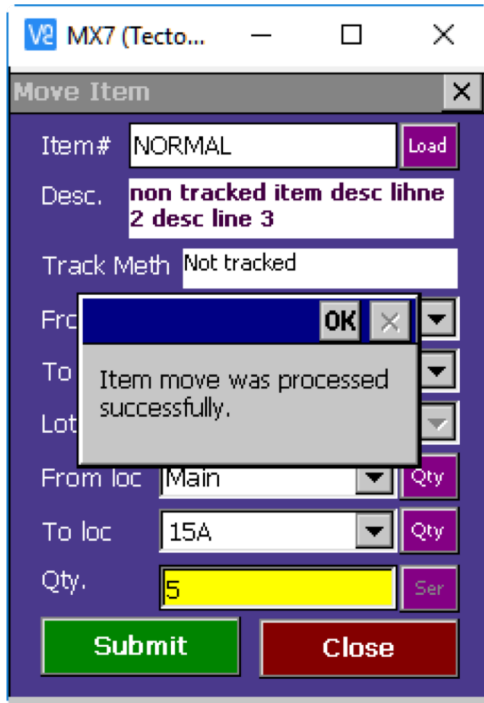
The main screen now has an option “Move Item”. This option will only be available if the custom id 2539 is enabled in a company database in Power Accounting.



To record movement of item into another location, click on the “Move Item” option. You ‘ll get the screen similar to below:



Select the appropriate values for the source and target warehouse and location and enter the quantity moved. Then, tap the Submit button. If the move was successful, a notification similar to below will pop-up on the screen.



The item count entry screen will now ask for a location first prior to scanning an item barcode. This is to ensure that the fast mode of counting will add the count to the correct item location.

